



# TRAMEC SLOAN

## WATER PUMPS FULL PRODUCT LINE

- // CASE
- // CATERPILLAR
- // CUMMINS
- // CHEVROLET
- // DETROIT DIESEL
- // FORD
- // GM / GMC
- // INTERNATIONAL
- // MACK / VOLVO
- // MERCEDES
- // NAVISTAR
- // THERMOKING





# TRAMEC SLOAN

## PRODUCTS DESIGNED TO PERFORM

Trusted by OEMs & Fleets for Over 40 Years, Tramec Sloan is an American Manufacturer & Supplier of Fittings, Air, and Electrical Products for the Heavy Duty Trucking Industry

### THE TRAMEC SLOAN PRODUCT LINE INCLUDES:

- 3-in-1 and 4-in-1 Wraps
- Tractor-to-Trailer Hose Assemblies
- Coiled Air Assemblies
- Bulk Nylon Air Brake Tubing
- Bulk Rubber Hose
- Air Brake Hose Assemblies
- Air Compressor Discharge Hose Assemblies
- Gladhands
- Pogos
- Hose Support Hardware
- Air Tanks
- Drain Valves
- Dash Control Valves
- Air Brake Valves
- Air Accessory Valves
- Hose End Repair Kits
- Nylon Tube Fittings
- Rubber Hose Fittings
- Brass & Composite DOT Push-In Air Brake Fittings
- Rubber Hose Air Brake Fittings
- Copper Tube Air Brake Fittings
- Bulkhead Fittings
- Transmission Fittings
- Brass Pipe Fittings
- 45° Brass Flare Fittings
- Inverted Flare Fittings
- Compression Fittings
- Brass Hose Barbs
- Garden Hose Fittings
- Grease Fittings
- Truck & Ball Valves
- Brass Drain Cocks & Shut-Off Valves
- Lead Free Fittings
- 7-Way ABS Cables
- Single & Dual Pole Cables
- Receptacles
- Electrical Connectors
- Bulk Wire & Cable
- Switches & Toggles
- Plugs
- Water Pumps
- Fuel Caps
- Wiper Blades
- And So Much More!

### AND FROM OUR FLEET ENGINEERS DIVISION:

- Mud Flaps & Flap Brackets
- Composite & Metal Fenders
- Fender Mounts
- Roll-Up Door Systems
- Side Skirts & Belly Panels
- Hydraulic Load Bars

---

## ORDERING & MORE INFORMATION

VISIT US ONLINE AT [TRAMECSLOAN.COM](http://TRAMECSLOAN.COM)  
AND [FLEETENGINEERS.COM](http://FLEETENGINEERS.COM)

- Find Your Sales Rep
- View the Latest Additions to Our Product Line
- Extensive Resource Libraries
- Product Support & Customer Service

### CUSTOMER SERVICE:

Our Team is Ready to Help:  
Monday - Friday, 8:00am - 4:30pm EST  
[customerservice@tramecsloan.com](mailto:customerservice@tramecsloan.com)  
Phone: 800.336.7778  
Fax: 877.286.6515



# WATER PUMPS

## COVERAGE ACROSS ALL MAKES & MODELS!

As the heart of the engine's cooling system, water pumps are a vital part of overall engine health. With the implementation of more strict emission standards over the years, under hood engine temperatures will continue to increase. That's why it's more important than ever to have a reliable water pump you can count on.

Tramec Sloan's water pumps are brand new, 100% vacuum-leak tested, American made, and carry a 2-Year/200,000-Mile warranty.

- CASE
- CATERPILLAR
- CUMMINS
- CHEVROLET
- DETROIT DIESEL
- FORD
- GM / GMC
- INTERNATIONAL
- MACK / VOLVO
- MERCEDES
- NAVISTAR
- THERMOKING



MANUFACTURED  
IN THE U.S.A

## CASE - 188D

- Includes Hub & Mounting Gasket
- Impeller Diameter: 3-1/8"
- OEM Pump #: A146584, A48363, A36979, A37758, G11939
- OEM Casting #: A37751



P/N	DESCRIPTION
6360	Case 188D

## CATERPILLAR - 3208 ENGINE

- 10.4L (636 In<sup>3</sup>)
- Bolt-On Pulley (Not Provided)
- 4-1/4" Impeller
- OEM Pump #: 2W1225, 9N6147, OR0781
- OEM Casting #: 9N3076, 9L3076, 9N1249



P/N	DESCRIPTION
6001	CAT 3208 10.4L Bolt on Pulley (Not Provided)

## CATERPILLAR - 3208 ENGINE

- 10.4L (636 In<sup>3</sup>)
- Bolt-On 3-Groove 5.62" Diameter Pulley (Provided)
- 4-1/4" Impeller
- OEM Pump #: 2W1225, 9N6147, OR0781
- OEM Casting #: 9N3076, 9L3076, 9N1249



P/N	DESCRIPTION
6002	CAT 3208 10.4L Bolt on 3 Groove Pulley

## CATERPILLAR - 3208 ENGINE

- 10.4L (636 In<sup>3</sup>)
- Threaded Bolt-On Pulley for Fan Clutch
- 4-1/4" Impeller
- OEM Pump #: 2W1227
- OEM Casting #: 9N3076, 9L3076



P/N	DESCRIPTION
6004	CAT 3208 10.4L Threaded Bolt On Pulley

## CATERPILLAR - 3406B/C ENGINE

- 14.6L (893 In<sup>3</sup>)
- Flat Gear, Not Interchangeable with the 3406 E 5-3/4" Impeller
- 74 Tooth Gear, 7-7/8" Diameter Flat Gear
- OEM Pump #: 1354926, 7W7019, 7C4957, OR8217
- OEM Casting #: 9N5034



P/N	DESCRIPTION
6006	CAT 3406B/C 14.6L Flat Gear

## CATERPILLAR - BACKING PLATE FOR 3406B/C ENGINE

- Water Pump Backing Plate
- Fits Several 3406B Models: 1N2959, 2W3277, 9N5035, 1025939, 1341340, 1341341, 3520203, OR8217, and 10R0482
- OEM Pump #: 7C9222, 4PL2383



P/N	DESCRIPTION
6010	CAT 3406B/C 14.6L Backing Plate

## CATERPILLAR - 3406E ENGINE

- Not Interchangeable with the 3406B/C
- 5-3/4" Impeller
- 74 Tooth, 7-7/8" Diameter Dished Gear with Angled Teeth
- OEM Pump #: 6I3890, OR4120, OR8330, OR8218, 10R0483
- OEM Casting #: 100-7479



P/N	DESCRIPTION
6012	CAT 3406E

## CATERPILLAR - 3306 ENGINE

- This Pump Differs from Other 3306 Models in that it Has a Bolt Holding the Gear in Place and Lacks a Spline Drive
- OEM Pump #: 2W8001, OR9785, OR1002
- OEM Casting #: 1W4619, 7N196, 172-7827, 154-3945



P/N	DESCRIPTION
6013	CAT 3306

## CATERPILLAR - 3116 ENGINE

- 3.75" Pulley
- OEM Pump #: 4W7589



P/N	DESCRIPTION
6014	CAT 3116 3.75" Pulley

## CATERPILLAR - 3406B/C/E ENGINE

- Same as the 6012, but with Straight Tooth on the Gear
- 5-3/4" Impeller
- 74 Tooth, 7-7/8" Diameter Dished Gear with Straight Teeth
- OEM Pump #: 6I3890, OR4120, OR8330, OR8218
- OEM Casting #: 161-5718, 153-9023 (Gear Number)



P/N	DESCRIPTION
6015	CAT 3406B/C/E Straight Tooth

## CATERPILLAR - 3116/3126

- 3.75" Pulley
- Comes with Installed Plugs
- OEM Pump #: 1208402, 4P3682, OR1011, OR1013, 1593141, 4P3682
- OEM Casting #: 4P3681 (Body), 7W3780 (Pulley)



P/N	DESCRIPTION
6016	CAT 3116 / 3126 3.75" Pulley Dual Spout

## CATERPILLAR - 3116/3126

- 4.37" Pulley
- Comes with Installed Plugs
- OEM Pump #: 4P3683, 9Y5249, OR1015, OR3007, 9V4879
- OEM Casting #: 4P3681 (Body), 7C7890 (Pulley)



P/N	DESCRIPTION
6017	CAT 3116 / 3126 4.37" Pulley

## CATERPILLAR - 3116/3126

- 3.75" Pulley
- This Pump has One Spout. The Casting May have an Additional Port in Place of the Missing Spout and May be Factory Plugged
- OEM Pump #: 126-8277, 352-2149
- OEM Casting #: 285121



P/N	DESCRIPTION
6018	CAT 3116 / 3126 3.75" Pulley One Spout

## CATERPILLAR - C15

- Bolt-On Dome Gear with Straight Teeth
- 5.9" Impeller Opening
- OEM Pump #: 1615719, 10R0484, OR9869
- OEM Casting #: 161-5718, 161-5719



P/N	DESCRIPTION
6019	CAT C15 Straight Teeth

## CATERPILLAR - C12

- OEM Pump #: 1767000, 1006944, 1358053



P/N	DESCRIPTION
6020	CAT C12

## CATERPILLAR - C15/C18 ACERT

- OEM #: 2807374, 3145155, 3362213, 2243229, 10R8660



P/N	DESCRIPTION
6021	CAT C15 ACERT

## CATERPILLAR - C9, 3126E

- OEM #: 352-2080, 10R5406, 227-4298, 200-1212 260-1546, 227-4300



P/N	DESCRIPTION
6022	CAT C9, 3126E

## CATERPILLAR - C7, 3126B

- OEM #: 352-2109, 10R5407, 227-8843, 227-4299

P/N	DESCRIPTION
6023	CAT C7, 3126B



## CUMMINS - SMALL CAM FFC

- 2-Groove Pulley
- 7-Hole Mount
- NTC-270-CT, NT855-C280, NTC-290-R, NT855-C310, NT-310, NTC-355, NT855-C335, NTC350, NTA855-C360, NTC290
- OEM Pump #: AR45090, 3801784, 3000886
- OEM Casting #: 219040, 210238
- No Vent
- 5.0" Impeller

P/N	DESCRIPTION
6051	Cummins Small Cam FFC 2 Groove Pulley



## CUMMINS - BIG CAM

- Multi-Groove, 4-5/8" Diameter Pulley
- Vented
- 4-1/2" Impeller
- NTC290, NTC350, NTC400,
- Formula 290, 350 - \*Non-Vented
- 7-Hole Mount
- OEM Pump #: 3801788, 3022474, AR45184, 3036876
- OEM Casting #: 218274, 3045163

P/N	DESCRIPTION
6052	Cummins Big Cam



## CUMMINS - PANCAKE

- 5-1/2" Bore
- Short Shaft with Pulley (Non-FFC)
- NH230, NH250, NHC270, NHE225 Diesel, NT280, NT300, NT310, NT335, NT380, NTA380, NTC280, NTC335, NTC350 Diesel
- OEM Pump #: AR4284, AR4283, BM78372, 4919813
- OEM Casting #: 196845

P/N	DESCRIPTION
6053	Cummins Pancake 5 1/2" Bore Short Shaft





## CUMMINS - SMALL CAM FFC IDLER

- 2-Groove Pulley
- OEM Pump #: 3064920, AR8851
- OEM Casting #: 208118



P/N	DESCRIPTION
6058	Cummins Small Cam FCC Idler 2 Groove Pulley

## CUMMINS - BIG CAM IDLER

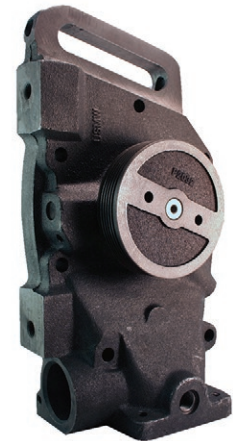
- 6-Groove Pulley
- OEM Pump #: 3064919, AR45189
- OEM Casting #: 215397



P/N	DESCRIPTION
6059	Cummins Big Cam Idler 6 Groove Pulley

## CUMMINS - BIG CAM III

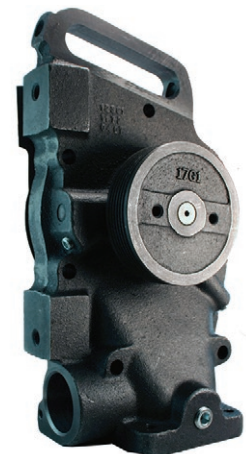
- 4-2/3" Multi-Groove Pulley
- 4" Impeller
- Vented
- NTC300, NTC350, and NTC400
- Formula 300, 350, 400, and 475
- OEM Pump #: 3004923
- OEM Casting #: 218274



P/N	DESCRIPTION
6061	Cummins Big Cam III

## CUMMINS - BIG CAM IV, 855

- 4.275" Multi-Groove Pulley
- 4-1/2" Impeller
- 1/4" Vented Hole
- Applications: 300, 350, 400, Fleet 300, NTC-Formula 300, 350, 400, NTC-475
- OEM Pump #: 3801708, 3045943, 3049543, AR45217
- OEM Casting #: 3036877, 3045163



P/N	DESCRIPTION
6064	Cummins Big Cam IV

## CUMMINS - LTA 10 SERIES

- Engines Before 1991
- 4-Hole Mount
- Applications: LTA10-240, 270, and 300 Engines
- OEM Pump #: 3803402, 3801840
- OEM Casting #: 3039182, 3035157
- 4.090" Impeller
- Covered Gear



P/N	DESCRIPTION
6068	Cummins LTA 10 Series

## CUMMINS - 88 BIG CAM IV

- 4.275" Multi-Groove Pulley
- 4-1/2" Impeller
- NTC-300, 315, 350, 365, 400
- OEM Pump #: 3803138, 3803030
- OEM Casting #: 3062899, 3053538



P/N	DESCRIPTION
6069	Cummins 88 Big Cam IV

## CUMMINS - 88 BIG CAM IV IDLER

- Smooth Pulley
- OEM Pump #: 3065000



P/N	DESCRIPTION
6070	Cummins 88 Big Cam IV Idler Smooth Pulley

## CUMMINS - 88 BIG CAM IV IDLER

- 4-Groove Pulley
- OEM Pump #: 3081234, 3062931, 3064201
- OEM Casting #: 3064201, 3062693, 3064201R



P/N	DESCRIPTION
6071	Cummins 88 Big Cam IV Idler 4 Groove Pulley

## CUMMINS - N14

- 4.275" Multi-Groove Pulley
- 4-1/2" Impeller
- Modified Suitcase Style
- 6-Bolt Mounting
- OEM Pump #: 3803605, 3803361
- OEM Casting #: 3069644, 3076523

P/N	DESCRIPTION
6073	Cummins N14



## CUMMINS - N14 IDLER

- Multi-Groove Pulley (6 Grooves)
- Press-On Bearing Cover
- OEM Pump #: 3066330
- OEM Casting #: 3072355

P/N	DESCRIPTION
6074	Cummins N14 Idler 6 Groove Pulley



## CUMMINS - B SERIES

- 4 Cylinder (3.9L) and 6 Cylinder (5.9L)
- 2-Hole Mount
- Hardened Pulley - No Belt Lip
- OEM Pump #: 3286277, 3802358, 3802004, 3913432, R4723690, 3903749, 3802790, F3AZ-8501ARM (Ford Application)
- OEM Casting #: 3913132, 3913432, 3920310, 3928395, 3903357

P/N	DESCRIPTION
6075	Cummins B Series Hardened Pulley No Belt Lip



## CUMMINS - L10-E SERIES

- 10L (64 Cu. In.)
- Engines: 1991 & After
- 3-Hole Mount
- Longer Shaft than 3800745RX, L10-310E, L10-330E, and M11 Series
- OEM Pump #: 3803403, 4955705, 4003929, 3800737
- OEM Casting #: 3882615
- 4.09" Impeller
- Exposed Gear

P/N	DESCRIPTION
6076	Cummins L10-E 10L



## CUMMINS - C SERIES, 8.3L

- Hardened Pulley with Belt Lip, Short Nose
- 4-1/3" Flat-Pulley
- OEM Pump #: 3804883, 3806180, 3802081, 3905357, 3913430, F3HZ-8501B (Ford Application)
- OEM Casting #: 3903357, 3913430, 3802051, 3913439



P/N	DESCRIPTION
6077	Cummins C Series 8.3L Short Nose Hardened Pulley with Belt Lip

## CUMMINS - L-10 SERIES IDLER

- Engines Before 1991
- Fan Drive Idler Assembly
- 3.9" Multi-Groove Pulley (8 Grooves)
- Press-On Bearing Cover
- OEM Pump #: 3062602
- OEM Casting #: 3060884, 3064201R, 3062602



P/N	DESCRIPTION
6078	Cummins L10 Series Idler 8 Groove Pulley

## CUMMINS - ISB

- Hardened Pulley
- OEM Casting #: 3920310
- OEM Pump #: 3286278, R4723690, 3285410, 3285414



P/N	DESCRIPTION
6081	Cummins ISB Hardened Pulley

## CUMMINS - ISC

- Long Nose/Hardened Pulley
- OEM Pump #: 3286293, 4089647, 3973114
- 8.3L
- OEM Casting #: 2370-10C



P/N	DESCRIPTION
6082	Cummins ISC 8.3L Long Nose Hardened Pulley

## CUMMINS - DINA

- 6-Cylinder, 8-Cylinder
- V-6 (155 Cu. In.) Engines
- V-8 (210 Cu. In.) Engines
- OEM Pump #: AR61788, A34079A05, 4919812
- OEM Casting #: 555260



P/N	DESCRIPTION
6083	Cummins DINA

## CUMMINS - C ENCORE

- Water Pump Kit - Hard
- OEM Pump #: 4089647



P/N	DESCRIPTION
6084	Cummins C Encore

## CUMMINS - ISC & ISL

- ISC (8.3L) & ISL (8.9L)
- Dome Pulley
- OEM Pump #: 3804927, 3940052, 4089647(NX)
- OEM Casting #: 2370-10L, 2369-10, 1926-10



P/N	DESCRIPTION
6086	Cummins ISC / ISL Dome Pulley

## CUMMINS - ISX 10GR

- 15.0L (912 Cu. In.)
- Equipped with 10-Ribbed Serpentine Belt Pulley
- OEM Pump #: 4089908



P/N	DESCRIPTION
6088	Cummins ISX 10GR 15.0L 10 Ribbed Pulley

## CUMMINS - ISX 12GR

- 15.0L (912 Cu. In.)
- Equipped with 12-Ribbed Serpentine Belt Pulley
- OEM Pump #: 4089910, 3684449



P/N	DESCRIPTION
6089	Cummins ISX 12GR 15.0L 12 Ribbed Pulley

## CUMMINS - L10 & M11 E SERIES

- Short Shaft
- 3-Hole Mount
- OEM Pump #: 4955706, 3800745, 3800479, 4003929, 3401009, and 2882145

P/N	DESCRIPTION
6090	Cummins L10 / M11 E Series 3 Hole Mount Short Shaft



## CUMMINS - C SERIES LONG NOSE

- Dome Style Nose
- OEM Pump #: 3800974, 3926912, 3923568, 3285323

P/N	DESCRIPTION
6091	Cummins C Series Long Nose Dome Style



## CUMMINS - B SERIES, NEW STYLE

- Open Faced, 5 Vane Impeller
- 2-Hole Mount
- OEM Pump #: 3286275

P/N	DESCRIPTION
6092	Cummins B Series New Style 5 Vane Impeller



## CUMMINS - ISB SERIES

- 5.9L & 6.7L
- OEM Pump #: 3800984, 4891252, 2881804

P/N	DESCRIPTION
6093	Cummins ISB Series



## CUMMINS - ISX & ISZ

- 12-Groove Pulley, Pump Only
- OEM #: 3684450 & 3683651

P/N	DESCRIPTION
6094	Cummins ISX & ISZ, 12-Groove Pulley, Pump Only



## CUMMINS - ISM M11

- For Engine Models: ISM CM875, M11 MECHANICAL, ISM CM876, M11 CELECT PLUS, ISM CM876 E, M11 CELECT, ISM11 CM876 SN, QSM11 CM570, ISM CM570, and ISM CM570/870
- OEM #: 4955708

P/N	DESCRIPTION
6095	Cummins ISM M11



## CUMMINS - ISX/QSX

- OEM #: 4089909

P/N	DESCRIPTION
6096	Cummins ISX/QSX



## CUMMINS - ISM/QSM

- OEM #: 4955709, 4089455 & 4972851

P/N	DESCRIPTION
6097	Cummins ISM/QSM



## DETROIT DIESEL - 53 SERIES

- Left Hand - 2-Belt Pulley
- OEM Pump #: 23506003, 5144685, 5109551
- OEM Casting #: 5144688, 5119280

P/N	DESCRIPTION
6101	Detroit Diesel 53 Series Left Hand



## DETROIT DIESEL - 53 SERIES

- Right Hand - 2-Belt Pulley
- OEM Pump #: 23506007, 5144686, 5178658, 5144687, 5109046
- OEM Casting #: 5144689, 5178318, 5119281, 5144889

P/N	DESCRIPTION
6102	Detroit Diesel 53 Series Right Hand



## DETROIT DIESEL - 71 SERIES IN-LINE

- Left Hand - Standard Capacity
- OEM Pump #: 23506723, 5149706, 5150439, 5159059, 5186575, and 5135595
- OEM Casting #: 5135601, 5186573, 8920924, 5178317

P/N	DESCRIPTION
6103	Detroit Diesel 71 Series In-Line Left Hand Standard Capacity



## DETROIT DIESEL - 71 SERIES IN-LINE

- Right Hand - Standard Capacity
- OEM Pump #: 23506735, 5149707, 5135596, 5186576, 5159060
- OEM Casting #: 5135602, 5186574, 8920925, 517318

P/N	DESCRIPTION
6104	Detroit Diesel 71 Series In-Line Right Hand Standard Capacity



## DETROIT DIESEL - 71 SERIES IN-LINE

- Left Hand - High Capacity
- OEM Pump #: 23506704, 5149710, 8920915, 23506204
- OEM Casting #: 5182069, 8920915, 8920917

P/N	DESCRIPTION
6113	Detroit Diesel 71 Series In-Line Left Hand High Capacity



## DETROIT DIESEL - 71 SERIES IN-LINE

- Right Hand - High Capacity
- OEM Pump #: 23506711, 5149708, 8920916
- OEM Casting #: 5135611, 5182070, 8920916, 8920918

P/N	DESCRIPTION
6114	Detroit Diesel 71 Series In-Line Right Hand High Capacity





## DETROIT DIESEL - 8.2L LATE STYLE

- With Heater Bypass
- No Pulley
- OEM Pump #: 8928672, 8927158
- OEM Casting #: 8924657, 8828804, and 8926904
- Aftermarket Casting #: 40-181



P/N	DESCRIPTION
6119	Detroit Diesel 8.2L Late Style with Heater Bypass (No Pulley)

## DETROIT DIESEL - 50/60 SERIES

- After 12/90
- 61-Tooth Gear
- Rear Mount
- OEM Pump #: 23505895, 23505895, 23520136, R3518216, 23522707
- OEM Casting #: 23505894, 23517027
- Premium Seal
- Metal Back Plate/ Seal
- Gear Driven
- Std. Flow Capacity
- 7-Vane Impeller



P/N	DESCRIPTION
6122	Detroit Diesel 50 / 60 Series 7 Vane Impeller

## DETROIT DIESEL - 50/60 SERIES

- After 12/90
- High Capacity with Reservoir/Pouch
- OEM Pump #: 23522721, 23526039, 23517025, 23518215, 23522707, 23539602
- OEM Casting #: 23517027, 23522721
- Gear Driven with 2 Outlets
- High Horsepower (470 & Up)
- Second Series
- 3/8" Pipe Ports
- 6-Vane Impeller



P/N	DESCRIPTION
6131	Detroit Diesel 50 / 60 Series Pocket Style 6 Vane Impeller

## DETROIT DIESEL - 60 SERIES EGR

- EGR = Exhaust Gas Recirculation
- OEM Pump #: 23532542, 23535017, 23531257
- OEM Casting #: 23530427
- 12.7L Water Pump



P/N	DESCRIPTION
6132	Detroit Diesel Series 60 EGR 12.7L

## DETROIT DIESEL - 60 SERIES EGR

- EGR = Exhaust Gas Recirculation      - 14.0L Water Pump
- OEM Pump #: 23532543, 23535018, 23531258
- OEM Casting #: 23530429



P/N	DESCRIPTION
6133	Detroit Diesel Series 60 EGR 14.0L

## DETROIT DIESEL - DD13/DD15

- OEM #: EA 472 200 04 01



P/N	DESCRIPTION
6134	Detrot Diesel DD13 / DD15

## DETROIT DIESEL - 60 SERIES EGR

- EGR = Exhaust Gas Recirculation      - Small Gear, 49 Teeth
- 14.0L Water Pump                              - OEM #: 23538636



P/N	DESCRIPTION
6135	Detroit Diesel 60 Series 14.0L EGR Small Gear

## FORD - 6.0 DIESEL POWERSTROKE 2003-2005

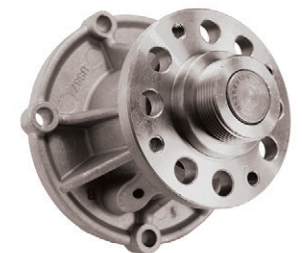
- OEM Pump #: 3C3Z8501, PW480, 3C3Z-8501-BA, 3C3Z-8501-ABRM



P/N	DESCRIPTION
6125	Ford 6.0 Powerstroke 2003-2005

## FORD - 6.0 DIESEL POWERSTROKE 2005-2010

- OEM Pump #: 4C3Z8501AC, PW491, 4C3Z-8501-AB, 4C3Z-8501-ABRM, F81Z8501-ABRM



P/N	DESCRIPTION
6126	Ford 6.0 Powerstroke 2005-2010

## FORD - 6.0 DIESEL POWERSTROKE 2004-2006

- OEM Pump #: 18-1784, 4C3Z-8501ABRM, F8128501ABRM



P/N	DESCRIPTION
6128	Ford 6.0 Powerstroke 2004-2006

## FORD - 6.0 DIESEL POWERSTROKE 2003

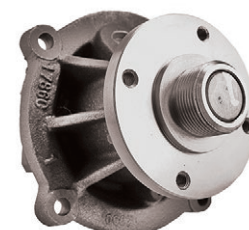
- OEM Pump #: 18-1785, 3C3Z-8501ABRM



P/N	DESCRIPTION
6129	Ford 6.0 Powerstroke 2003

## FORD - 6.0 DIESEL POWERSTROKE 2003-06 HEAVY DUTY

- OEM Pump #: 18-1786



P/N	DESCRIPTION
6130	Ford 6.0 Powerstroke 2003-2006 Heavy Duty

## FORD - 6.9/7.3 LITER DIESEL

- 1983-94 (non Power Stroke)
  - Belt Driven
  - 4-1/2" Hub Outside Diameter
  - Pulley Not Supplied
  - Threaded Hub
- OEM Pump #: E4TZ-8501C, E4TZ-8501B
  - OEM Casting #: 446430C1, 446430C2, 446430C3, 446430C4



P/N	DESCRIPTION
6304	Ford 6.9 L / 7.3L 1983-1994 Non Powerstroke

## FORD - 6.9/7.3 LITER DIESEL

- 1983-94 (non Power Stroke)
  - 1991-93
  - 1994 F600 Only without Pump Mounted Fan
- OEM Pump #: F1HZ-8501CRM
  - OEM Casting #: F0HN8505AA, F0HZ-8508-AA



P/N	DESCRIPTION
6309	Ford 6.9L / 7.3L 1983-1994 Non Powerstroke

## FORD - 7.3 LITER TURBO DIESEL, 94-95 DIRECT INJECTION

- OEM Pump #: F4TZ-8501ARM, F5TZ-8501BRM, F5TZ-8501B, F5TZ-8501C
- OEM Casting #: 1822823C1, 1823611C2

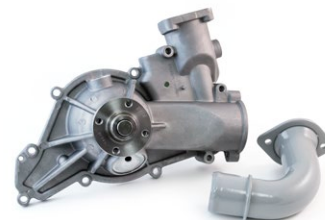
P/N	DESCRIPTION
6310	Ford 7.3L 1994-1995



## FORD - 7.3 LITER TURBO DIESEL, 96-02 DIRECT INJECTION

- Application: 2000-2002 E150/E350, 2000-2002 Excursion, 1996-2002 F250, F350, F450, F550 Super Duty, 1996-1997 F53/59 Stripped Chassis
- OEM Pump #: F6TZ-8501AA, F7TZ-8501BRM, F81Z-8501ARM, F81Z-8501A, F81Z-8501B, F81Z-8501CRM, F81Z-8501FA, F7TZ-8501B, F7TZ-8501C, F6TZ-8505ARM, F6TZ-8505BRM,
- OEM Casting #: 1831005C2

P/N	DESCRIPTION
6311	Ford 7.3L 1996-2002



## FORD - 6.6/7.8 LITER

- 401 & 476 Diesel
- Auxiliary Mount
- Cab Over
- 1987-1991
- 3/4" Outlet
- OEM Pump #: E8HZ8501B, E7HZ8501A, E9TZ8501B
- OEM Casting #: E7HN8508AA, E6HN8508AA, E7HN8508AA

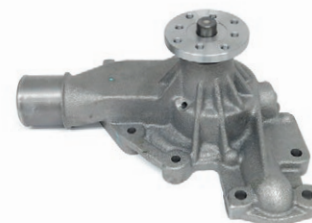
P/N	DESCRIPTION
6314	Ford 6.6/7.8L



## GM - 6.2/6.5 LITER DIESEL

- 1982-96, 1986-90 Chevy & GMC
- Belt Driven
- Conventional Cab
- OEM Pump #: 12514269, 15633465, 15633466, 12633466, 14082745, 23500133, 14061698
- OEM Casting #: 14024206

P/N	DESCRIPTION
6117	GM 6.2/6.5L 1982-1996 Belt Driven (Pulley Not Supplied)



## GM - 6.6 LITER DURAMAX, 2001-04

- OEM Pump #: 97216136, 19113733, 252723, 251674, 252383

P/N	DESCRIPTION
6123	GM 6.6L Duramax 2001-2004



## GM - 6.5 LITER DIESEL

- 1996-1999
- OEM Pump #: 12530176, 19168610, 88894036, 251-590, 5744662, 12534772
- OEM Casting #: 12553486, 12557071



P/N	DESCRIPTION
6124	GM 6.5L 1996-1999

## GM - CHEVROLET DURAMAX 6.6L DIESEL

- 2001 - 2006
- OEM Pump #: 97372515, 98031233



P/N	DESCRIPTION
6127	GM 6.6L Duramax 2001-2006

## MERCEDES BENZ - OM366, OM366A, OM366LA

- OEM Pump #: 366-200-5901, 366-200-0901, 366-200-0401, 366-200-4601, 355-200-5901



P/N	DESCRIPTION
6355	Mercedes Benz OM366 / OM366A / OM366LA

## MERCEDES BENZ - OM366LA EURO II

- OEM Pump #: 366-200-6001, 366-200-1501



P/N	DESCRIPTION
6356	Mercedes Benz OM366LA Euro II

## MERCEDES BENZ - OM364, OM364A

- 112 x 15mm Impeller
- OEM Pump #: 364-200-2001, 364-200-0101, 364-200-0901



P/N	DESCRIPTION
6357	Mercedes Benz OM364 / OM364A

## MERCEDES BENZ - OM904

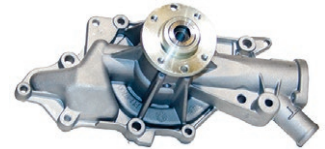
- 112 x 15mm Impeller
- OEM Pump #: 904-200-0401, 904-200-0801, 904-200-2601, 904-200-5101, 904-200-2001, 904-200-4901, 904-200-2661, 904-200-0601



P/N	DESCRIPTION
6358	Mercedes Benz OM904

## MERCEDES BENZ - SPRINTER VAN, L5, 2.7L

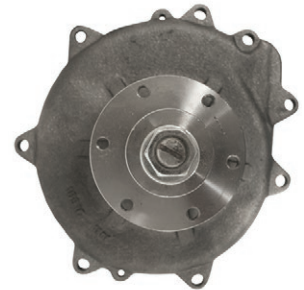
- For 2500, 3500 2.7L Diesel
- 2004-2007
- OEM Pump #: A6472000101, A642-200-1301, 5138057AA, 647-2000-0101



P/N	DESCRIPTION
6359	Mercedes Benz Sprinter Van L5 2.7L 2004-2007

## NAVISTAR - DT466 ENGINE

- Conventional Cab Models
- Belt Driven
- Pulley Not Supplied
- OEM Pump #: 685155C94, 685155C92
- OEM Casting #: 677856C1, 677856C2



P/N	DESCRIPTION
6301	Navistar DT466 Belt Driven Conventional Cab (Pulley Not Supplied)

## NAVISTAR - DT466 ENGINE

- Cab Over Engine Models
- Belt Driven
- Pulley Not Supplied
- OEM Pump #: 680899C92
- OEM Casting #: 677137C1



P/N	DESCRIPTION
6302	Navistar DT466 Belt Driven Cab Over (Pulley Not Supplied)

## NAVISTAR - 6.9/7.3 LITER DIESEL

- MV-404 and 446 Gas Engine
- Belt Driven
- OEM Pump #: 1809374C91, E4T2-8501C, 1805951C91, 1805952C91
- OEM Casting #: 446430C1, 446430C2, 446430C3
- 2-5/8" Hub O.D.
- Pulley Not Supplied



P/N	DESCRIPTION
6305	Navistar 6.9L / 7.3L MV-404/446 Gas Engine (Pulley Not Supplied)

## NAVISTAR - 9.0 LITER ENGINE

- 1976-83 Cargostar, S Series with 9.0L Diesel Engine,
- Belt Driven
- Press On Hub
- OEM Pump #: 1700594C91, 1700594C92
- OEM Casting #: 489173C1



P/N	DESCRIPTION
6306	Navistar 9.0L 1976-1983

## NAVISTAR - DTA360 ENGINE

- 5.9L (360 Cu. In.)
- Left Hand Thread with Bolt-On 1" Thick Hub
- Belt Driven
- Pulley Not Supplied
- OEM Pump #: 1815538C91, ZGA735327, 735445C91
- OEM Casting #: 677856C3



P/N	DESCRIPTION
6307	Navistar DTA 360 5.9L Left Hand Thread (Pulley Not Supplied)

## NAVISTAR - 7.6L 466, 8.6L 530, 6.7L 408

- 1994-97
- Various Applications with 6-Cylinder DT360/466 New Generation Diesel Engines
- Stamped Steel Impeller
- OEM Pump #: 1817687C92, 1817687C94, 1817687C95, 1817687C96
- OEM Casting #: 1821935C91, 1821935C1, 1821935C3



P/N	DESCRIPTION
6313	Navistar 6.7L / 7.6L / 8.6L DT408 / DT466 / DT530 1994-1997

## NAVISTAR - DT444E & T444E 7.3L

- 1994-2004
- Right Hand
- OEM Pump #: 1831676C92, 1823669C92, 1831676C31, YC3Z-8501AARM, YC3Z8501CA, 183167691
- OEM Casting #: 1822851C1, 1823669C92
- Direct Injection
- Screw-In Filter



P/N	DESCRIPTION
6315	Navistar 7.3L DT444E / T444E 1994-2004

## NAVISTAR - T444E 7.3L

- OEM #: 1823669C92

P/N	DESCRIPTION
6316	Navistar 7.3L T444E



## NAVISTAR - DT444E & T444E 7.3L

- 2003 - 2007
- 5-Bolt Pump
- Bolt-On Pulley
- OEM Pump #: 1842664C92, 1842665C93
- OEM Casting #: 1841765C1

P/N	DESCRIPTION
6317	Navistar 7.6L DT466 / 530E 2003-2007 5 Bolt



## NAVISTAR - MAXXFORCE 7.6, 4L

- OEM #: 1832498C91, 7081213C92

P/N	DESCRIPTION
6319	Navistar MaxxForce 7.6, 4L



## NAVISTAR - MAXXFORCE DT9 & DT10

- OEM #: 1889116C92

P/N	DESCRIPTION
6320	Navistar MaxxForce DT9 & DT10



## THERMOKING - ISUZU C201

- Refrigeration Units
- 207CC Diesel Engine
- OEM Pump #: 11-4576, 977696
- OEM Casting #: BTK, PH374

P/N	DESCRIPTION
6350	ThermoKing Isuzu C201





## THERMOKING - ISUZU

- Refrigeration Units
- 2.2 Liter Direct-Injection
- Threaded Auxiliary Port
- OEM Pump #: 11-5858
- OEM Casting #: M1, M2, M3



P/N	DESCRIPTION
6352	ThermoKing Isuzu 2.2L Direct Injection Threated Auxiliary Port

## THERMOKING - 2.2L ISUZU

- Refrigeration Units
- OEM Pump #: 11-5252, 11-9356



P/N	DESCRIPTION
6361	ThermoKing 2.2L Isuzu

## THERMOKING - YANMAR 482/486

- Refrigeration Units
- OEM Pump #: 18-1910



P/N	DESCRIPTION
6362	ThermoKing Yanmar 482 / 486

## VOLVO/MACK - MAXIDYNE

- 1.57" Long Shaft
- Mack End 675, 676 Engines
- OEM Pump #: 316GB443, 316GC1184, 316GC1211A, 316GC1211B
- OEM Casting #: 360GB443, 360GB343
- No Pulley
- Iron Impeller



P/N	DESCRIPTION
6205	Volvo/Mack END-T 675 / 676 Maxidyne

## VOLVO/MACK - CHARGED AIR ECONODYNE

- .94" Long Shaft
- Mack E6, EM6 & EMS-6 Engines
- No Pulley
- OEM Pump #: 316GC1210A
- OEM Casting #: 360GB443



P/N	DESCRIPTION
6208	Volvo/Mack E6 / EM6 / EMS-6 .94" Shaft (No Pulley)

## VOLVO/MACK - CHARGED AIR ECONODYNE

- 6-5/8" Diameter 3-Groove Pulley (Included)
- OEM Pump #: 316GC1210AX, 316GC1210A
- Mack E6, EM6 & EMS-6 Engine
- OEM Casting #: 360GB443



P/N	DESCRIPTION
6217	Volvo/Mack E6 / EM6 / EMS-6 3 Groove Pulley

## VOLVO/MACK - ASET WITH 5.3" PULLEY

- OEM Pump #: 316GC3193
- OEM Casting #: 2739-17



P/N	DESCRIPTION
6219	Volvo/Mack ASET 5.3" Pulley

## VOLVO/MACK - ASET WITH 5.9" PULLEY

- OEM Pump #: 316GC3196
- OEM Casting #: 2738-17



P/N	DESCRIPTION
6220	Volvo/Mack ASET 5.9" Pulley

## VOLVO/MACK - D11, D13, D15

- OEM #: 85142304, 85124621



P/N	DESCRIPTION
6221	Volvo/Mack D11, D13, D15

## VOLVO/MACK - E7 E-TECH WITHOUT PULLEY

- OEM #: 316GC284BX, 316GC3194



P/N	DESCRIPTION
6222	Volvo/Mack E7 E-Tech without Pulley

## **ORDERING INFORMATION:**

PHONE:  
616.395.5600

TOLL FREE PHONE:  
800.336.7778

TOLL FREE FAX:  
877.286.6515

CUSTOMER SERVICE:  
[customerservice@tramecsloan.com](mailto:customerservice@tramecsloan.com)

ONLINE:  
[tramecsloan.com](http://tramecsloan.com)  
[fleetengineers.com](http://fleetengineers.com)

## **U.S. MANUFACTURING & DISTRIBUTION:**

534 East. 48th Street  
Holland, MI 49423

1310 Freese Works Place  
Galion, OH 44833

30 Davis Street  
Iola, KS 66749

1800 East Keating Avenue  
Muskegon, MI 49442

CANADIAN DISTRIBUTION:  
Greater Toronto Area

P/N: WPCAT100

© 2019 TRAMEC SLOAN LLC - Holland, MI